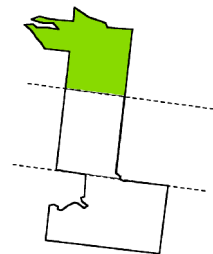
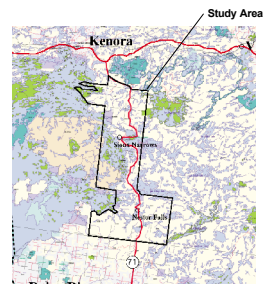


Sensitive Areas

Township of Sioux Narrows Nestor Falls - Schedule D

May 2007



Legend

Significant Wildlife Areas

- Sensitive Sites
- Sensitive Areas
- Provincial Hwy 71
- Other Roads
- Waste Disposal Sites
- Indian Reserves
- Abandoned Mine Sites
- Sand and Gravel
- Greenstone Belt



星 EDWARD HOSHIZAKI
崎 DEVELOPMENT CONSULTING

In Association with
Hilderman Thomas Frank Cram
Landscape Architecture * Planning

Sources:
Ontario Minister of Natural resources GIS Data, 2002
Township of Sioux Narrows Nestor Falls Assessment Data, 2001
Abandoned Mines Information System, 2009