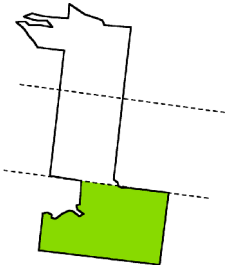
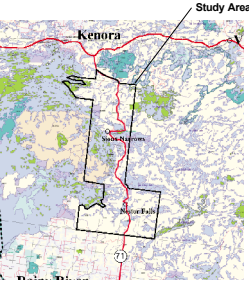


Township of
Sioux Narrows Nestor Falls

Zoning By-Law

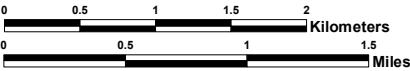
Township of Sioux Narrows Nestor Falls -
Schedule E

December 18, 2012



Legend

- | | |
|-------------------------------|----------------------------|
| General Commercial - GC | Tourist Commercial - TC |
| Residential Zone 1 - R1 | Rural Residential - RR |
| Residential Zone 2 - R2 | Extractive Industrial - MX |
| Industrial - M | Institutional - I |
| Open Space - OS | |
| Environmental Protection - EP | |
| Rural - R | |
| Waste Disposal - WD | |
| Provincial Hwy 71 | |
| Other Roads | |
| Indian Reserves | |



Sources:
Township of Sioux Narrows Nestor Falls Assessment Data, 2001
Township of Sioux Narrows Nestor Falls 911 Emergency Services Mapping, 2009